

2010/6/18

LUNASCAPE
CORPORATION

AFTERGLOW INSTALL GUIDE

Afterglow Installation Guide Version 1.1

Contents

Introduction	3
System requirements	3
Installing the webcam driver	3
Installation of Afterglow	4
1 Insert the Afterglow CD	4
2 The installer	4
3 Run "Install Afterglow"	5
4 Install Microsoft .NET Framework Version 2.0	6
5 Launching the Afterglow installer	6
6 The Setup Wizard	6
7 Read the license agreement.....	7
8 Select installation folder	9
9 Confirm installation.....	10
10 During installation.....	11
11 Installation complete.....	12
12 Desktop Afterglow icon.....	13

Introduction

Thank you for purchasing Afterglow. Afterglow is a tool designed to enhance presentations by realizing a range of operations through the laser pointer. This manual guides you through the installation and setup of Afterglow as well as required auxiliary software.

System requirements

Before installation of Afterglow, make sure that your system satisfies the requirements listed below. If your system does not satisfy the requirements below, Afterglow may not run properly.

CPU	Processor with processing capacity equivalent to Core2Duo or higher
OS	Microsoft Windows XP (32bit), Windows Vista (32bit, 64bit) , Windows 7 (32bit, 64bit)
Memory	At least 2GB
HDD	100MB available hard disk space or more
Video Card	XGA (1024x768) or higher resolution output on external graphics card
Privileges	Account with administrator privileges
Misc.	Green laser pointer
	A projector that can handle a screen resolution of at least XGA(1024x768)
	Webcam recommended by Lunascape (for information on recommended models, please refer to the web site)

Installing the webcam driver

Install the software associated with the webcam recommended by Afterglow.

Note: Please refer to the installation manual provided by the webcam vendor.

Installation of Afterglow

This manual describes how to install the Afterglow software on a computer.

1 Insert the Afterglow CD

Insert the Afterglow CD into the CD drive of your computer.

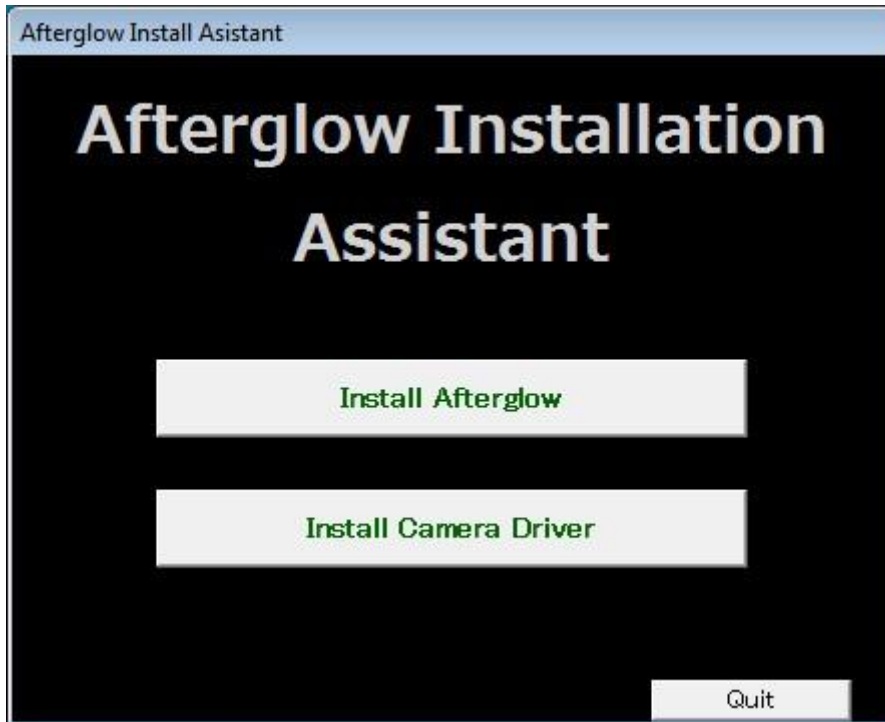
2 The installer

When inserting the Afterglow CD the Afterglow Install Assistant should launch automatically. If the installer does not start up, click on the "SetupWizard" icon in the CD drive to force the Afterglow Install Assistant to start up.



3 Run “Install Afterglow”

When the Afterglow Install Assistant appears the screen shown below appears. To prepare for installation, click the “Install Afterglow” button.



4 Install Microsoft .NET Framework Version 2.0

If Microsoft .NET Framework Version 2.0 is not installed on your computer, a message is displayed, as shown below. Follow the instructions to install Microsoft .NET Framework Version 2.0 on your computer. This process takes approximately five minutes.

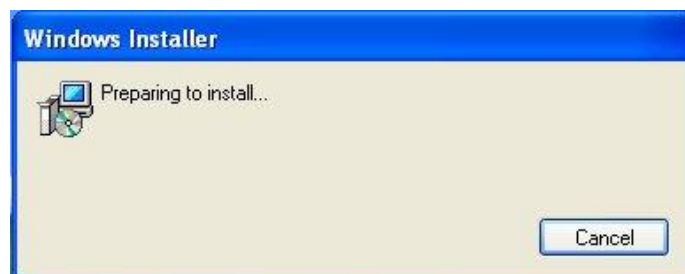


Alternatively, if you choose to install only Afterglow, the above installation may be performed from the "Afterglow Setup" dialog shown below.



5 Launching the Afterglow installer

Once installation of Microsoft .NET Framework Version 2.0 is complete, the "Preparing to install..." message appears and the preparations for installing Afterglow begin.



6 The Setup Wizard

Next, the Setup Wizard screen appears automatically, as shown below.

To begin the setup of Afterglow, click “Next”.



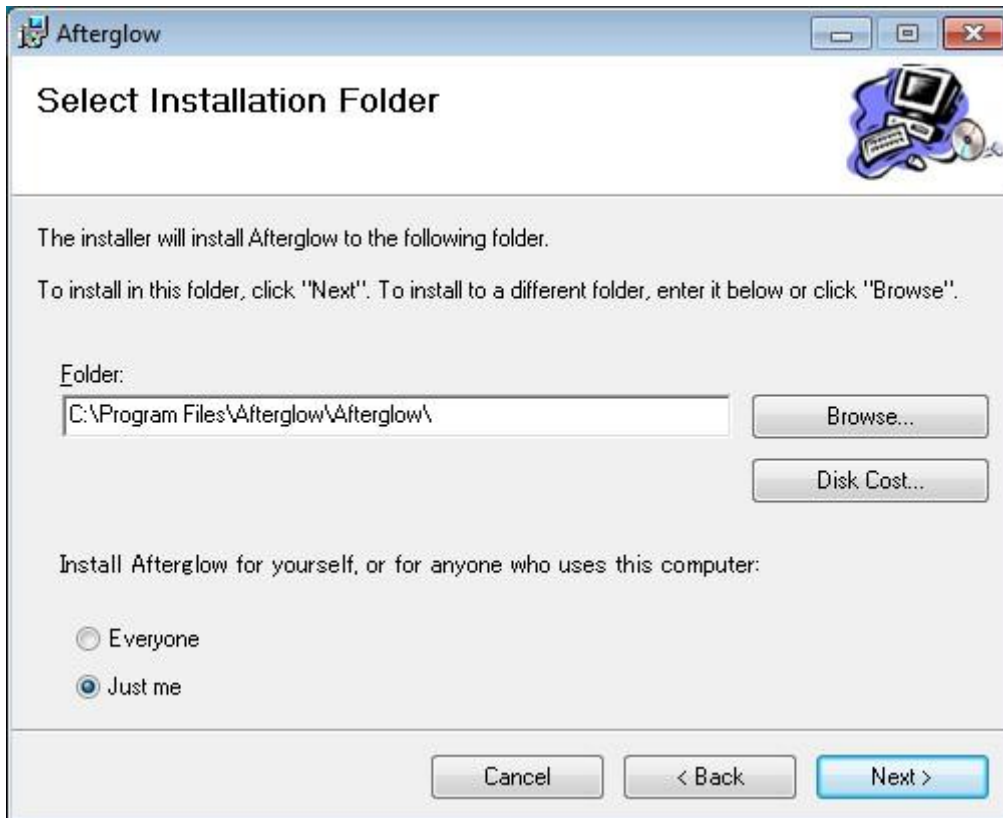
7 Read the license agreement

When the Afterglow End User License Agreement dialog appears, read the license agreement carefully and if you agree with it, click the “Agree” button and then click “Next”.



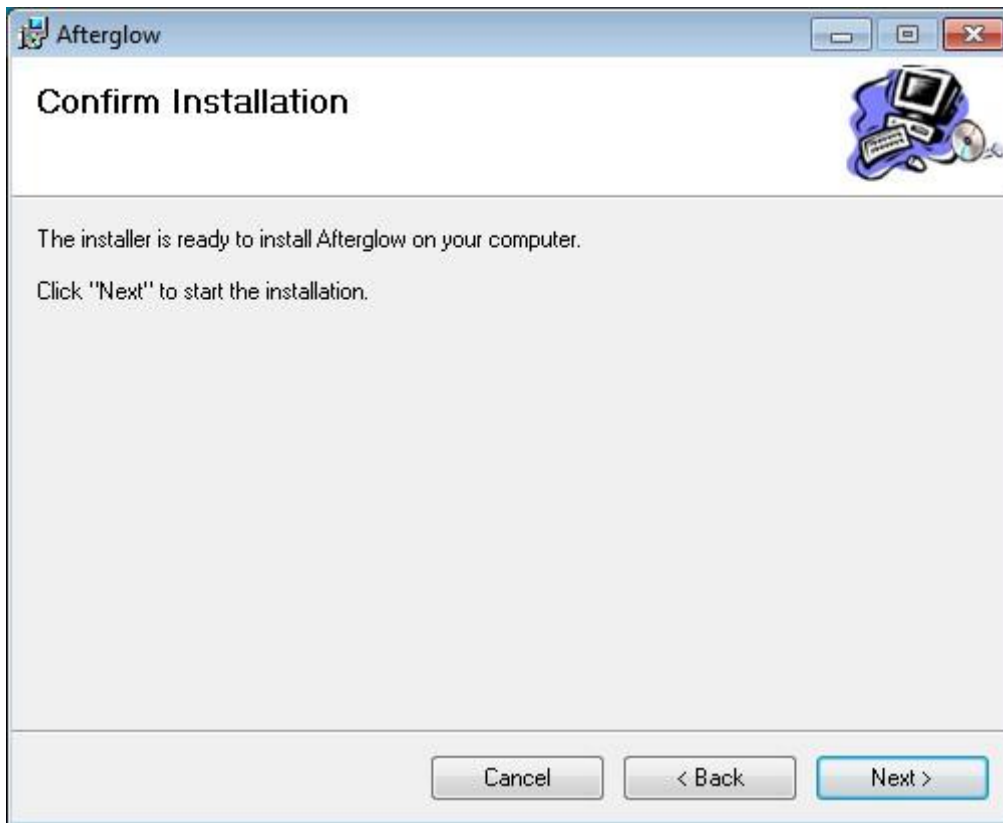
8 Select installation folder

When the “Select Installation Folder” dialog appears, via the “Browse” button select the folder where you want Afterglow installed and then click “Next”.



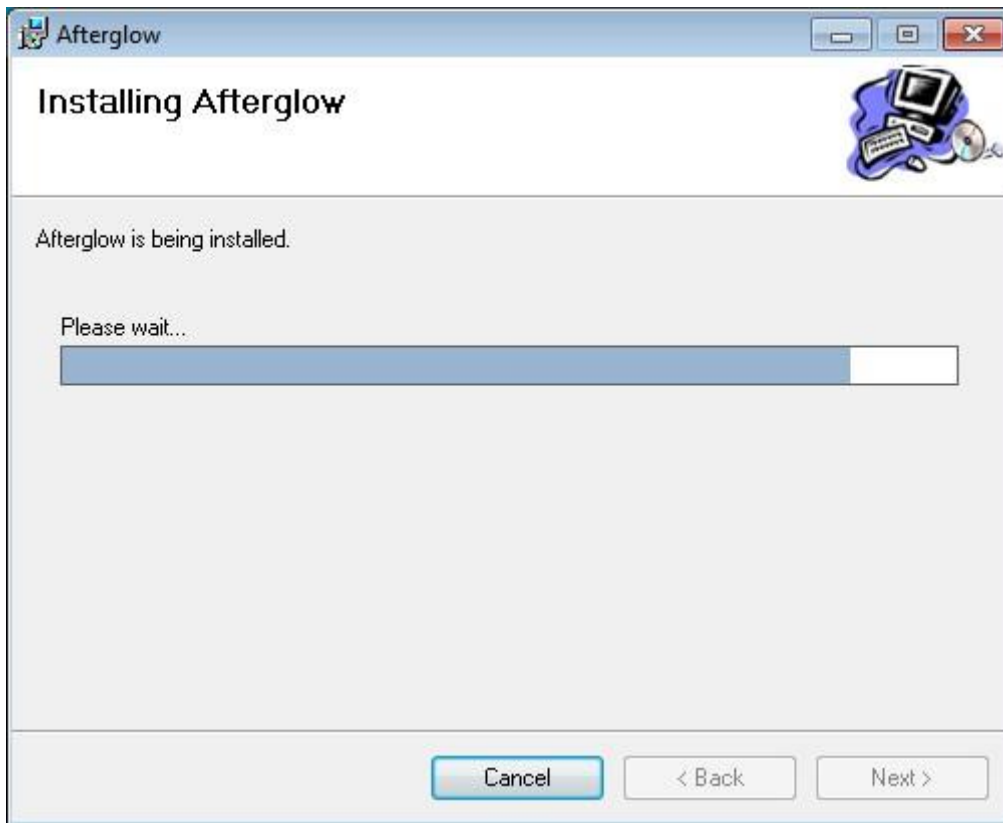
9 Confirm installation

When the “Confirm Installation” dialog appears, click “Next” to begin installing Afterglow.



10 During installation

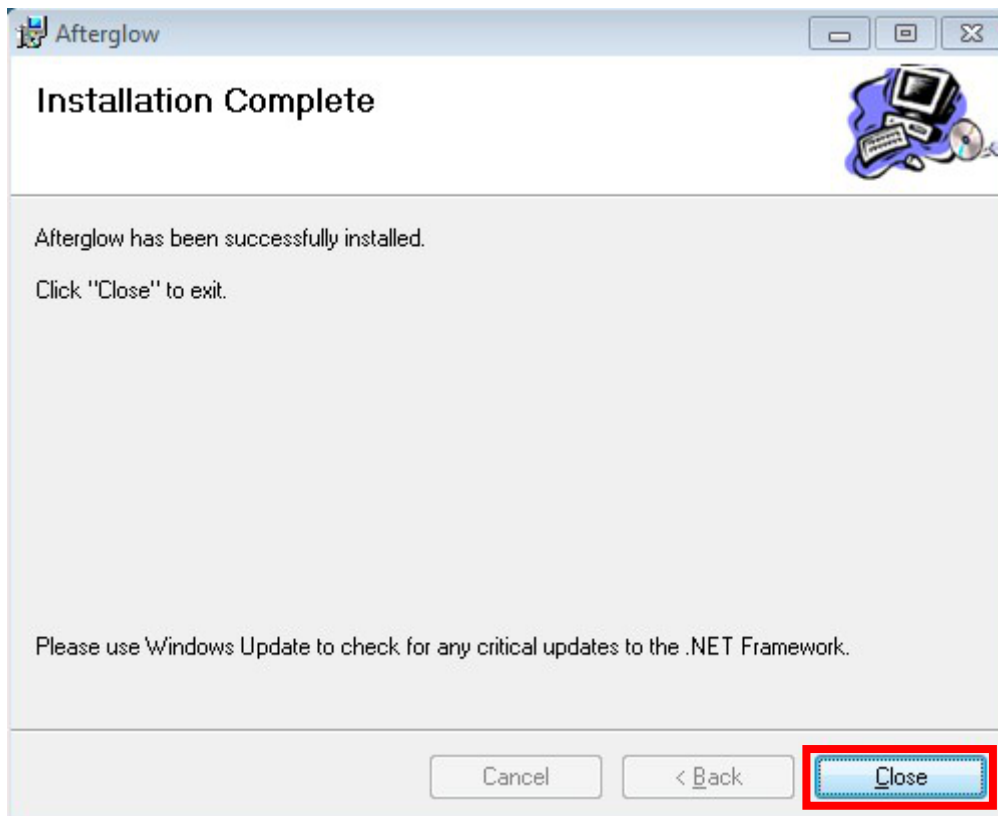
Installation will begin immediately.



11 Installation complete

When the window below appears, the installation is complete.

Clicking "Close" will close this window.



12 Desktop Afterglow icon

When installation is complete, an Afterglow icon will appear on the desktop.



This concludes the installation of Afterglow.