

Afterglow Installation Guide

This guide will step through the installation of Afterglow and all necessary drivers and software. The following software must be installed on your system before you can begin using Afterglow.

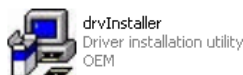
1. Microsoft .NET Framework Installation

Afterglow is built using the Microsoft .NET Framework. The .NET Framework can be installed from Microsoft .NET folder of the CD. The latest version .NET Framework is available at the following Microsoft website.

<http://www.microsoft.com/NET/>

2. Webcam Driver Installation

Install the driver for the webcam that came with the Afterglow package. The webcam driver is located in the Camera Driver folder of the CD. To begin the installation first connect the webcam to the system using the USB cable provided. Double click on the drvInstaller icon located in the Camera Driver folder.



The installer will automatically install the driver onto your system. Click Close once the installation has been completed.

Afterglow Installation Procedure

Prior to installing the product, please be sure that the system meets the minimum system requirements required to run Afterglow. Afterglow may not run properly if the system does not meet the minimum system requirements.

Afterglow System Requirements:

- Intel Pentium III or Pentium M 1GHz class processor. (Recommend: Pentium M 2GHz+ Processor)
- Microsoft Windows XP SP1
- 256MB RAM (512MB or more recommended)

- 50MB of available hard disk space
- XGA (1024 x 768) or higher resolution output on external graphics card.

Afterglow Installation Instructions

1. Inserting the installation CD

Insert the installation CD into the systems DVD/CD drive.

2. Begin Installation

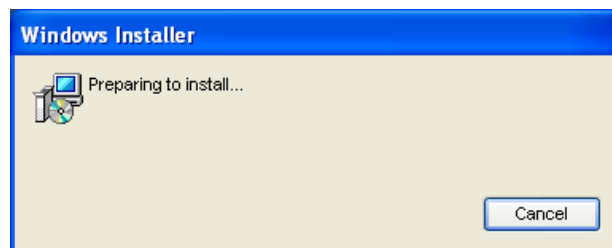
Launch the Setup Wizard by double clicking on the AfterglowSetup_en icon located in the Afterglow folder.



3. Microsoft .NET Framework Message

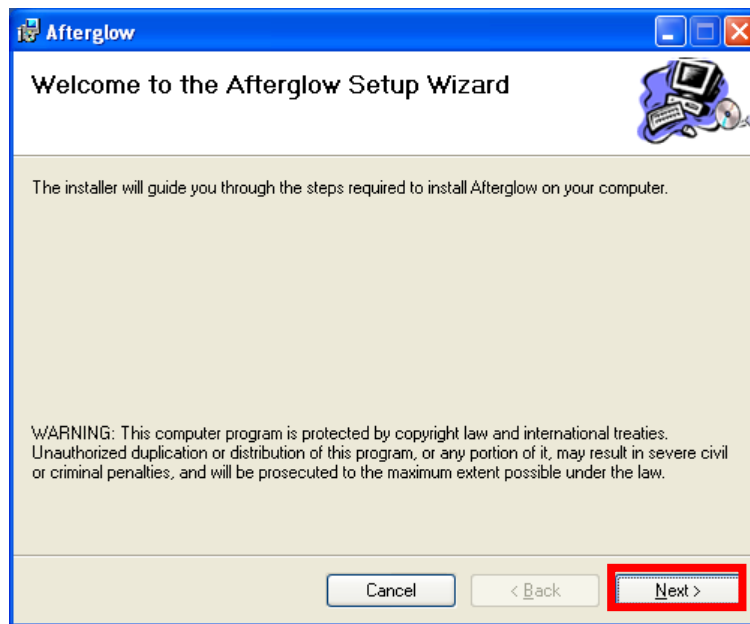
A message will appear if the Microsoft .NET Framework Version 2.0 is not installed on the system. Please follow the instructions above to install the Microsoft .NET Framework. If Microsoft .NET Framework is already installed on the system, the Windows Installer “Preparing to install...” screen will appear.

This screen will not appear unless Microsoft .NET Framework is installed.



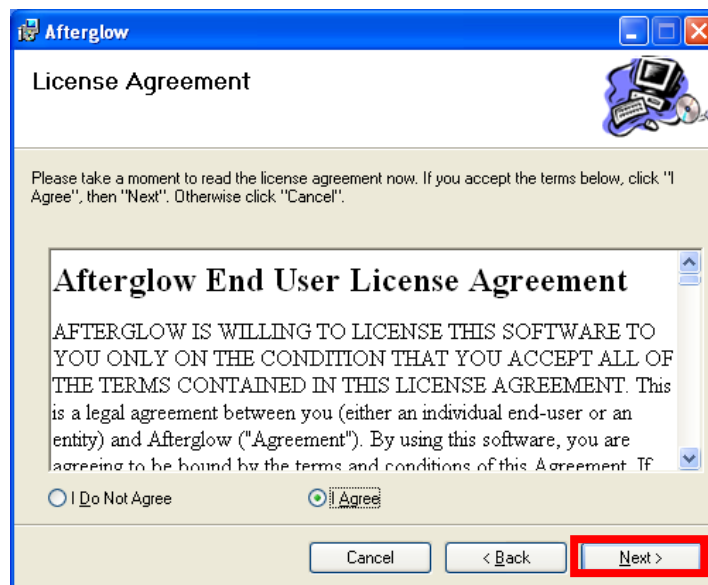
4. Setup Wizard

The Setup Wizard screen appear automatically once the software is ready for installation. Click on the next button to begin Afterglow setup.



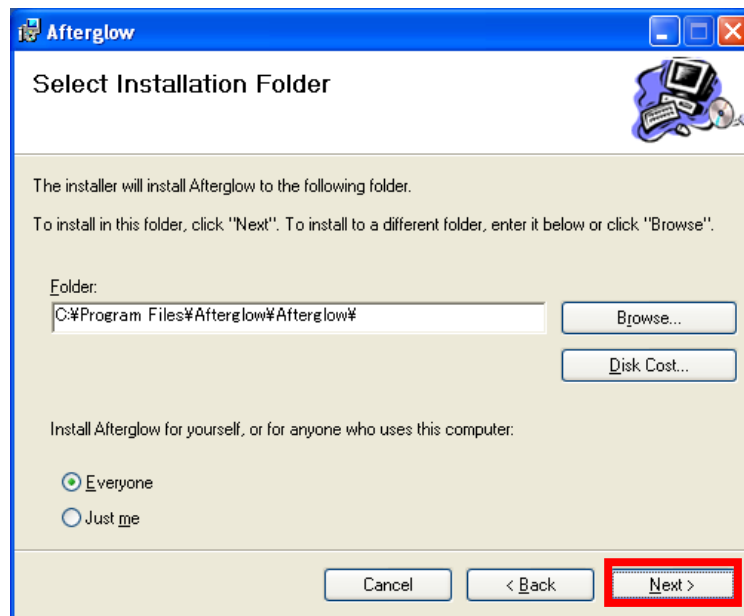
5. End User Licensing Agreement

When the End User Licensing Agreement (EULA) screen appears please read through the contents of the agreement. To agree click the I Agree radio button, and click next to continue with the installation.



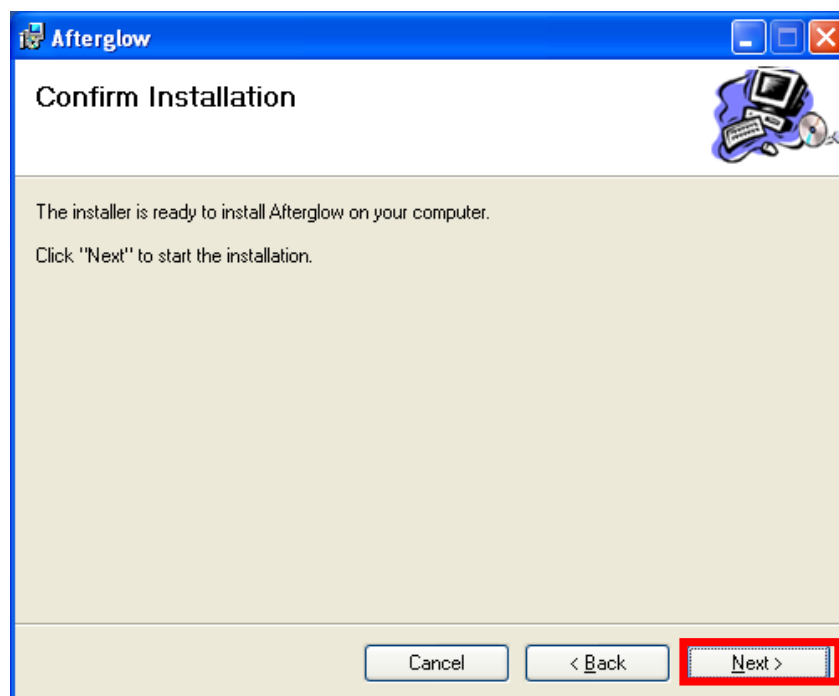
6. Select Installation Folder

When the Select Installation Folder screen appears, press the browse button to select the folder where Afterglow will be installed, and click the Next button to continue.



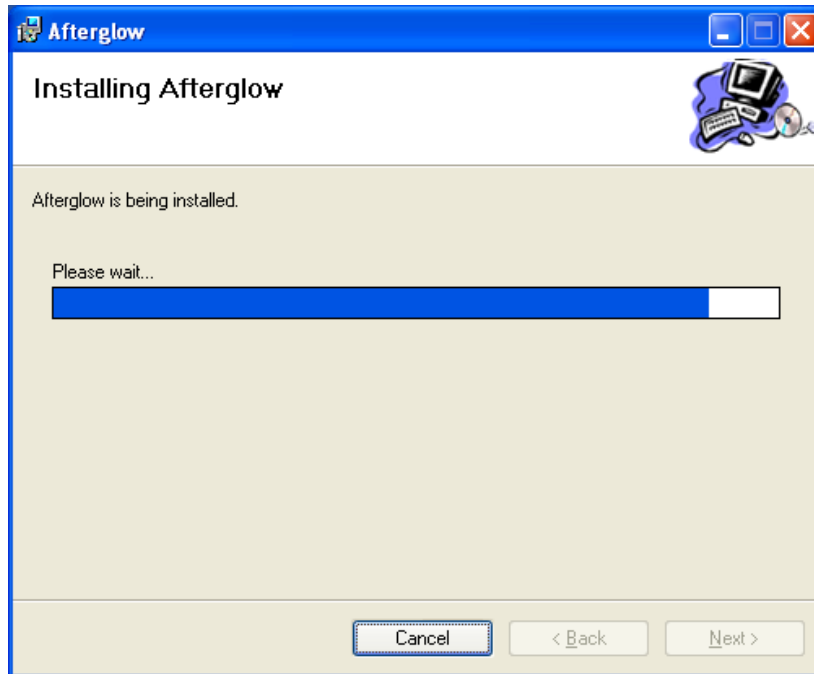
7. Confirmation of Installation

When the Installation Confirmation screen appears, click next to begin installing the software.



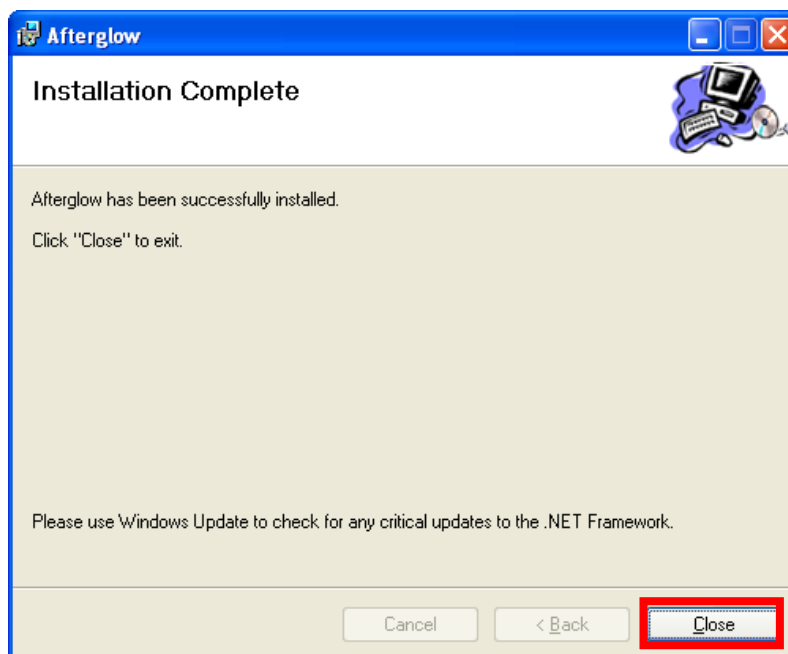
8. During Afterglow Installation

Installation will begin immediately.



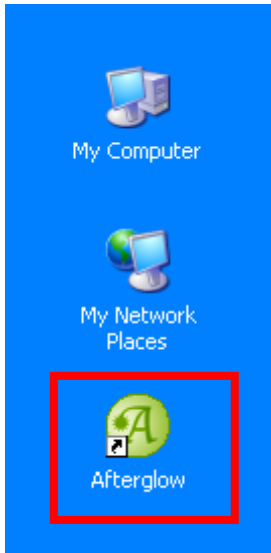
9. Installation Completed

The software installation is complete when the following screen appears. Click the Close button to close the dialog box.



11. Desktop Afterglow Icon

Following installation the Afterglow icon will appear on the desktop



This completes the installation of Afterglow. Please refer to the Afterglow Setup Guide in order to setup Afterglow once the application is launched.